

Development of a Microcontroller Based Digital Breath Alcohol Threshold Limit Detector

Jonathan A. Enokela¹, David O. Agbo²

^{1,2}(Department of Electrical and Electronics Engineering, University of Agriculture, Makurdi, Nigeria)

ABSTRACT: In many countries of the world, a major cause of vehicle accidents is attributed to driving under the influence of alcohol. Various solutions to this problem have been found by the use of different types of technology. The digital breath alcohol threshold limit detector presented in this work correlates the breath alcohol concentration (BrAC) to the blood alcohol concentration (BAC) and determines the amount of BrAC required for safe driving. This is achieved by using a stable and sensitive gas sensor to detect the amount of alcohol, particularly ethanol, in the breath of the driver. The output of the sensor, in form of voltage, is processed by a microcontroller that warns the driver in both visual and audible forms if it is safe to drive or not. The electronic circuit including the sensor, buzzer, and liquid crystal display (LCD), was implemented. The sensor was calibrated using ethanol solutions in the range that includes legal limits allowed for driving. The program for the microcontroller was developed using MikroC development environment and hardware simulation was carried out with the aid of Proteus Design Suite version 8.0. The project achieves the objective of being a screening type device that is meant to detect the presence of alcohol beyond a threshold value and to give appropriate advice to the vehicle driver. The device may also be useful to regulatory agencies that monitor the amount of alcohol intake by drivers.

Keywords: Alcohol, alcohol Detector, blood, breath, Microcontroller, Road Safety

I. INTRODUCTION

Road traffic accidents that result from the cases of driving under the influence (DUI) of alcohol have become a major source of concern to authorities in many countries of the world. In Nigeria, statistics released by the Federal Road Safety Corps (FRSC) for the year 2013 shows that the combination of the factors of speed violation, loss of control, and dangerous driving caused 61.2% of the total number of road traffic crashes for the year. These three factors most probably could be attributed to drivers who were drunk [1]. In India and United Kingdom the percentage of fatalities in road traffic accidents due to alcohol related problems is said to be as high as 40% [2]. The problem of drinking under the influence of alcohol has led to the introduction of laws in many countries to prevent its occurrence by penalizing offenders [2, 3, 4, 5, 6, 7, 8].

When a person consumes alcohol it enters the blood stream. This forms the blood alcohol concentration (BAC). As a result of exchange of chemicals and air in the alveoli, the exhaled human breath contains a concentration of alcohol known as the breath alcohol concentration (BrAC). The blood breath ratio (BBR) or partition ratio gives the relationship between the BrAC and BAC as 2100:1. This assumes that the amount of alcohol in 2100 liters of expired air from the lung is the same as is found in 1 liter of blood [4, 9]. In addition to alcohol the human breath contains a variety of gaseous components and condensates called volatile organic compounds (VOCs) that correlate physiological and metabolic processes to these compounds released from one's mouth [10, 11, 12, 13]. In many countries statutory limits are set for breath alcohol concentration; for most European countries the legal concentration limit is 0.25 mg/L or 0.05% BrAC [14]. In Great Britain the Road Traffic Act 1988 set the statutory limits as 9 µg/100mL and 35 µg/100mL [3]. In South Africa the legal limits are 0.24 mg/L for normal drivers and 0.10 mg/L for professional drivers [5] while in India the limit is 30 mg/L [2]. In Hong Kong the prescribed limit is stated as 22 µg/100mL of breath or 50 mg/100mL of blood or 67 mg/100mL of urine [6].

A variety of technologies have been used in non-invasive or unobtrusive breath analysis [15, 16, 17, 18, 19]. These methods have used sophisticated sensors based on electrochemical and infrared spectroscopy such as Selected Ion Flow Tube Mass Spectrometry (SIFT-MS) [15] and Laser Absorption Spectroscopy (LAS) [18]. When responses to a number of VOCs rather than one analyte are required, the use of electronic nose detection system (eNose) may be preferred [11, 19].

The system described in this work uses a gas sensor that is sensitive to the detection of ethanol which is a prominent component in the breath of a person who has consumed alcohol. The system that has been designed in this work is built around a single microcontroller and it is cheap to implement in comparison to many existing breath analyzers.

II. MATERIALS AND METHOD

The block diagram of the digital breath alcohol threshold limit detector is depicted in Fig. 1. The alcohol contained in the breath is detected by the alcohol sensor which, in this case, is the MQ3 gas sensor [20]. The sensor gives an analogue output voltage that is proportional to the amount of alcohol contained in the breath. This voltage is processed by the microcontroller which sends the output to visual and audible displays.

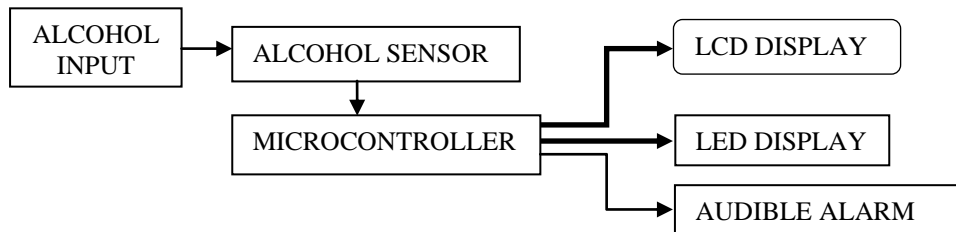


Fig. 1: Block diagram of a digital breath alcohol threshold limit detector

The block diagram was developed into the schematic diagram shown in Fig. 2 that was used to simulate the hardware of the system in Proteus Virtual System Modeling Environment version 8.0 [21]. The variable resistor RV2 is used to generate the voltage that represents the output of the alcohol sensor. The microcontroller used in this system is the PIC16F887 [22].

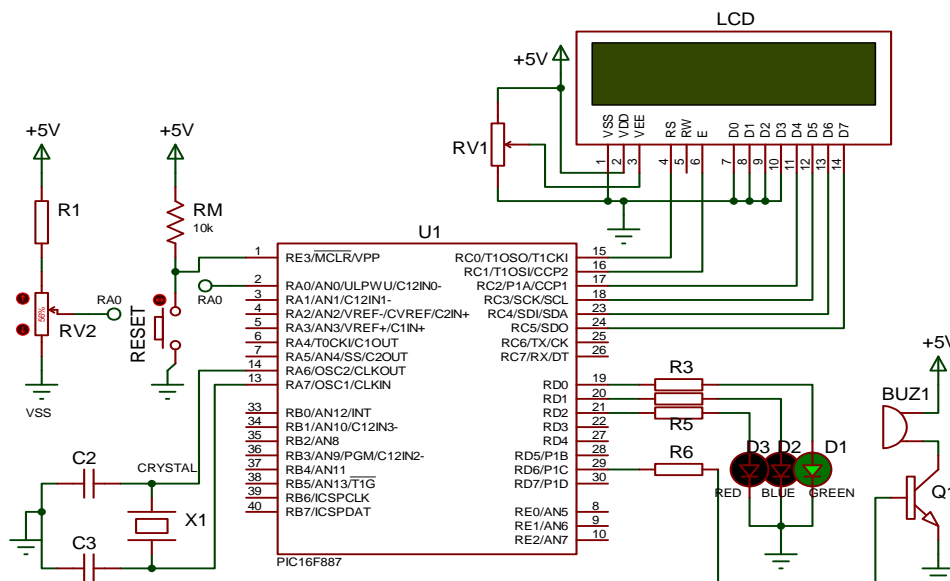


Fig. 2: Schematic diagram of digital breath alcohol threshold limit detector

2.1 Sensor Calibration

Solutions that contained ethanol of various concentrations were made. The concentrations of the solutions were correlated to the blood alcohol concentration which is defined to be the percentage of alcohol, in grams, in 100 mL of blood. Thus 0.02% BAC implies that there is 20 mg of alcohol in 100 mL of blood. The concentration range varies from below the legal limit to values above the legal limit. The concentrations were thus made to correspond to BAC values of 0.00, 0.02, 0.04, 0.06, 0.08, 0.10, 0.12, 0.14, 0.15, 0.16, 0.18, and 0.20 [23]. The solutions were placed on the sensor and the corresponding output voltages were recorded on a digital voltmeter. These voltages were reproduced by the variable resistor RV2 in Fig. 2 during hardware simulation; the voltages were also used to set the threshold values during the implementation of the hardware.

III. FIRMWARE DEVELOPMENT

The flowchart of the firmware of the system is depicted in Fig. 3. When the system is powered ON, it monitors the analogue input from the alcohol sensor. This input is then converted into the corresponding blood alcohol concentration (BAC). The program then checks if this BAC is within the legal range. Appropriate decisions are taken and these are sent to the visual and audible displays to advise the driver. The legal limits vary from one country to another and these can be set in the firmware of the system.

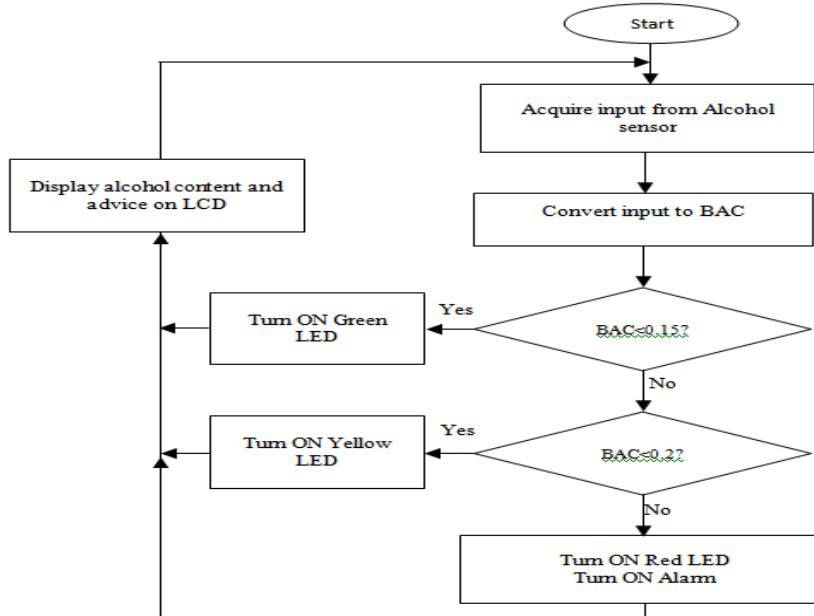


Fig. 3: Flowchart for program of the digital alcohol breath alcohol threshold limit detector

IV. RESULTS AND DISCUSSION

The firmware for the system was written in C language using MikroC Integrated Development Environment (IDE) version 6.0 [24]. Upon successful simulation of the firmware in this environment, the executable file was then imported into Proteus Design Suite IDE [21] where the circuit in Fig. 2 was simulated. A screenshot of the program development in MikroC IDE is shown in Fig. 4. Figs. 5, 6 and 7 show the simulation results for the three possible cases: the alcohol in the breath is less than the set limit; the alcohol in the breath is within the range of set limit and the alcohol in the breath is greater than the set limit. These three situations are also explained in Table 1.

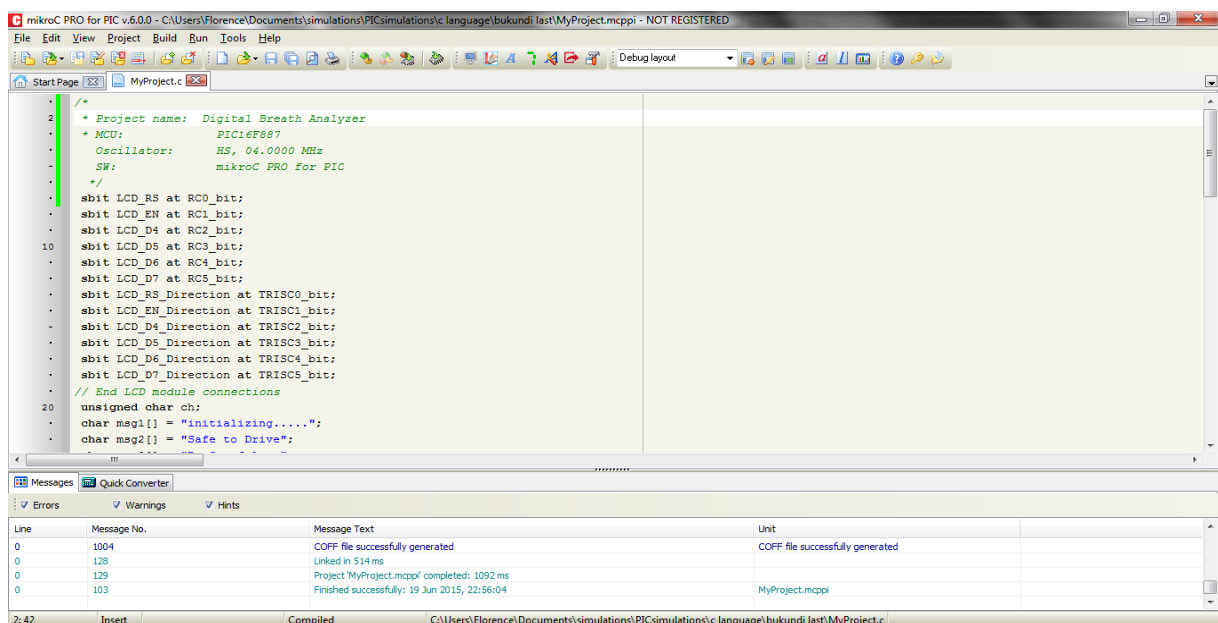


Fig. 4: Development of program using mikroC IDE

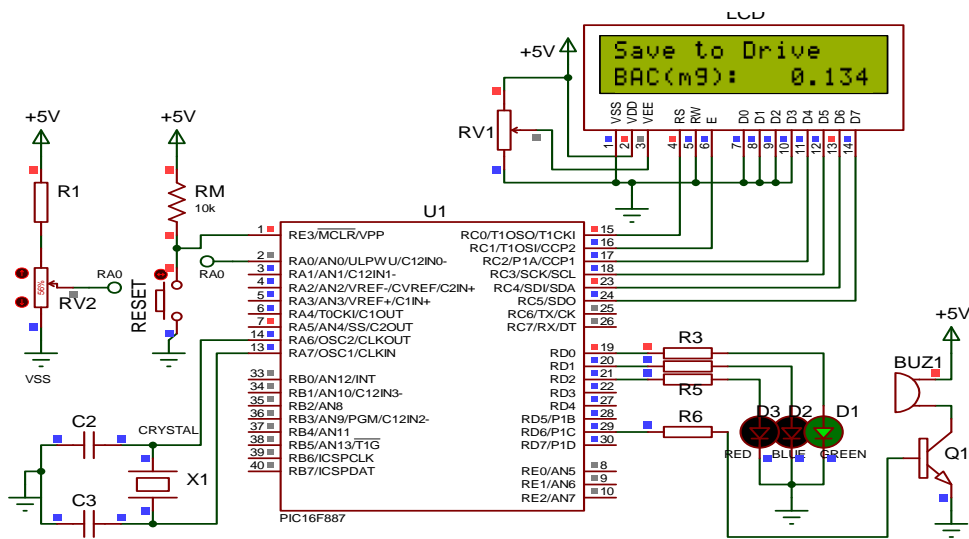


Fig. 5: Simulation results for alcohol content less than the set limit

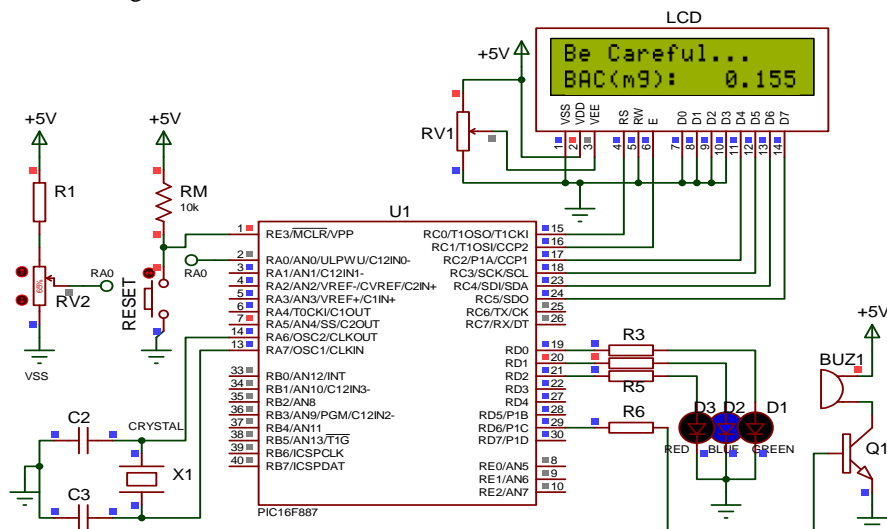


Fig. 6: Simulation results for alcohol content within the range of the set limit

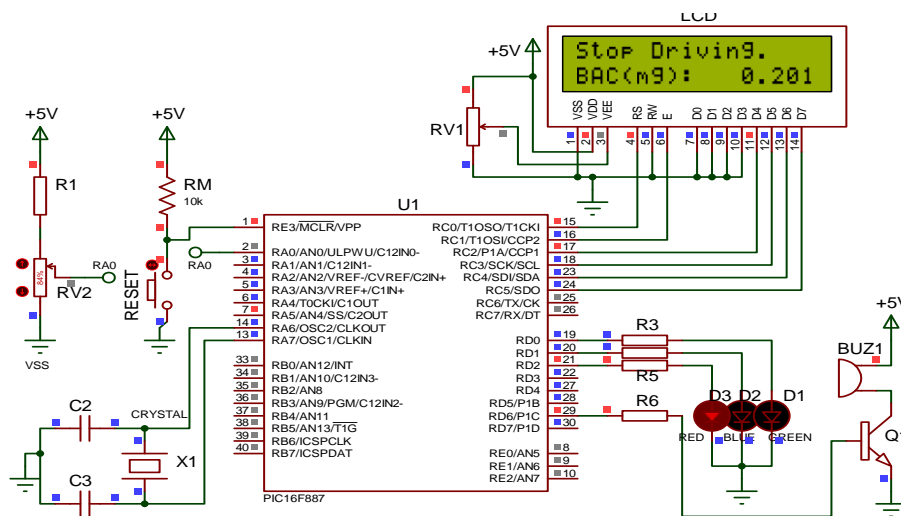


Fig. 7: Simulation results for alcohol content greater than the set limit

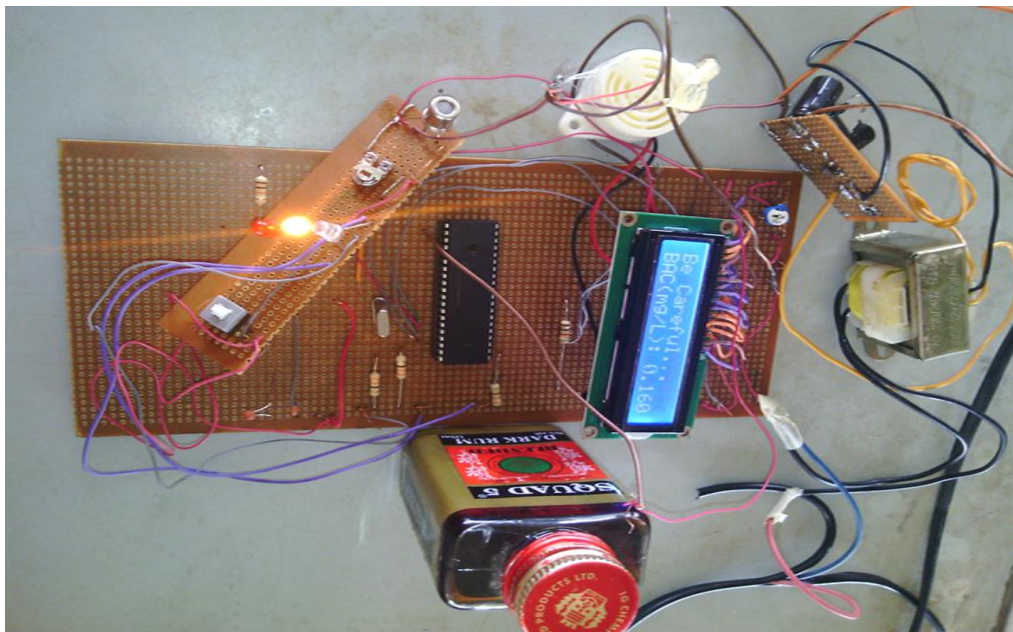


Fig. 8: implemented circuit on a vero board

Table 1: Sensor Conditions and Microcontroller Decisions

Indication	Output
Alcohol content is less than set digital value of 0.2 mg (BAC).	Displays “Save To Drive” on the LCD and green LED turns ON
Alcohol content is between the digital values of 0.155 to 0.1992 mg (BAC).	Displays “Be Careful” on the LCD and blue LED turns ON
Alcohol content is greater than digital value of 0.22 mg (BAC).	Displays “Stop Driving” on the LCD, red LED turns ON and buzzer turns ON

The firmware was burnt into the program memory of the microcontroller with the aid of PICkit 2 programmer [25] and the hardware was built on a vero board. The ethanol solutions were then applied to the sensor and the outputs were observed to correspond to desired situations as typically shown in Fig. 8

V. CONCLUSION

A digital breath alcohol threshold limit detector that uses a microcontroller as a major component has been implemented. This purely advisory system takes the breath of the driver as input and, through indications, advises the driver whether to continue driving or not. The system can be installed in a car or it can be made as a handheld device to be used by relevant regulatory agencies for checking drivers on the highways.

REFERENCES

- [1] Road Crash Statistics, Federal Road Safety Corps, Federal Republic of Nigeria, 2013 Annual Report, p.59, <http://frsc.gov.ng/2013%FRSC%20Annual%20Report.pdf>
- [2] Anil Kumar Chawla, P. Cheena Chawla, and Seema Chaudhary, Knowledge, Attitude and Social Behaviour about the use of Disposable Breath Analyzers for Preventing Road Accidents due to Drink and Drive - A cross sectional study in New Delhi-NCR, *International Journal of Research in Management and Technology*, 4(5), 2014, 232-244.
- [3] Evidential Breath Alcohol Analysis Instrument: A Guide to Type Approval Procedures for Evidential Breath Alcohol Analysis Instrument used for Law Enforcement in Great Britain, *The Home Office Centre for Applied Science and Technology*, Woodcock Hill, Sandridge, St. Albans, AL4 9HQ, June, 2013.
- [4] Ian R. Coyle, David Field and Graham A. Starmer, An Inconvenient Truth: Legal Implications of Errors in Breath Alcohol Analysis Arising from Statistical Uncertainty, *Australian Journal of Forensic Sciences*, 42(2), 2010, 101-114. http://epublications.bond.edu.au/law_pubs/337
- [5] N .G. Ntsasa and J. Tshilongo, Impact of Breath Alcohol Testing on Safety of South African Roads, *National Metrology Institute of South Africa (NMISA)*, Lynnwood Ridge. http://www.nla.org.za/conferences/proceedings_archive/2010/03_Tuesday%2009%20Nov%202010/Papers/T205%20Nap%20Ntsasa.pdf
- [6] The Hong Kong Police Force, Legislative Council Panel on Security: Breath Tests for Enforcing Drink Driving Offences, LC paper No. CB (2)191/08-09 (01), October 2008.
- [7] Florbela A. Dias, Tania Farinha, Fatima Dias, and Eduarda Filipe, Calibration and Verification of Breath Alcohol Detectors in Portugal, XIX IMEKO World Congress, *Fundamental and Applied Metrology*, Lisbon, Portugal, September 2009.

- [8] Pattern Approval Specifications for Evidential Breath Analysers, Australian Government National Measurement Institute, NMI R 126, June 2013, www.measurement.gov.au
- [9] Michael P. Hlastala, Physiology Laws of Alcohol Breath Testing, Division of Pulmonary and Critical Care Medicine, University of Washington, <http://www.mphlastala.com/Physiological%20Laws%20of%20ABT.pdf>
- [10] L. Wang, K. Kalynasundaram, M. Stanacevic, and P. Gouma, Nanosensor Device for Breath Acetone Detection, *Sensor Letters*, 8(5), 2010, 1-4.
- [11] Vanessa H. Tran, Hiang Ping Chan, Michelle Thurston, Paul Jackson, Craig Lewis, Deborah Yates, Graham Bell, and Paul S. Thomas, Breath Analysis of Lung Cancer Patients using an Electronic Nose Detection System, *Sensors Journal, IEEE*, 10(9), 1-6. <http://ieeexplore.ieee.org/xpl/articleDetails.jsp?arnumber=5482034>
- [12] Julian King, Karl Unterkofler, Susanne Teschl, Anton Amann, and Gerald Teschl, Breath Gas Analysis for Estimating Physiological Process Using Anesthetic Monitoring as a Prototypic Example, <http://www.mat.univie.ac.at/~gerald/ftp/articles-bm/BGASevoflurane.pdf>
- [13] Ima O. Essiet, Diagnosis of Kidney Failure by Analysis of the Concentration of Ammonia in Exhaled Human Breath, *Journal of Emerging Trends in Engineering and Applied Sciences*, 4(6), 2013, 859-862.
- [14] Bertil Hok, Jonas Ljungblad, Annika Kaisdotter Andersson, Mikael Ekstrom, and Mats Enlund, Unobtrusive and Highly Accurate Breath Alcohol Analysis Enabled by Improved Methodology and Technology, *Journal of Forensic Investigation*, 2(4), 2014, 1-8.
- [15] Real-Time Analysis of VOCs in Human Breath using SIFT-MS, White Paper, Syft Technologies, 3 Craft Place Middleton, Christchurch, New Zealand, www.syft.com.
- [16] A. Jonsson, B. Hok and M. Ekstrom, Development of a Breath Alcohol Analyser for use on Patients in Emergency Care, *World Congress on Medical Physics and Biomedical Engineering*, Munich, Germany, September 7-12, 2009, 84-87. https://www.researchgate.net/publication/225825712_Development_of_a_Breath_Alcohol_Analyzer_for_Use_on_Patients_in_Emergency_Care
- [17] Bacharach, Instruction 19-9174, Carbon Monoxide Breath Analysis Module, Operation and Maintenance, Rev. 1-March 1996, Bacharach Inc., 621 Hunt Valley Circle, New Kensington, PA 15068.
- [18] Matthew R. McCurdy, Yury Bakhirkin, Gerard Wysocki, Rafal Lewicki, and Frank K. Tittel, Recent Advances of Laser-Spectroscopy-based Techniques for Application in Breath Analysis, *Journal of Breath Research*, 1(1), 2007, R1-R12.
- [19] Walton, C., Patel, M., Pitts, D., Knight, P., Hoashi, M. and Turner, C., The Use of a Portable Breath Analysis Device in Monitoring Type 1 Diabetes Patients in a Hypoglycaemic Clamp: Validation with SIFT-MS Data. *Journal of Breath Research*, 8(3), 2014, Article no_037108.
- [20] Park, E. J. 2007. Sensor Report: MQ-3 Alcohol Sensor. Sensor Workshop. [Online] www.sensorworkshop.blogspot.com.
- [21] Labcenter Electronics (2014), Proteus Design Suite Version 8.0. [Online] Available: <http://www.labcenter.com> (October 21, 2014).
- [22] Microchip Technology Inc. (2006), PIC16F84A Datasheet, 2006. [Online] Available: <http://www.microchip.com/DevelopmentTools/ProductDetails.aspx?PartNO=dv164005> (July 19, 2010)
- [23] Herlina Abdul Rahim, Syed Daud Syed Hassan, Zulkifli Mohd Yusop, Chia Kim Seng and Noramli Abdul Razak, Breathalyzer Enabled Ignition Interlock System, *Jurnal Teknologi*, 54 (Sains & Kej.) Keluaran Khas, Jan. 2011, pp.1-12.
- [24] Mikroelektronika (2013), mikroC. [Online] Available: www.mikroe.com (October 21, 2014).
- [25] Microchip Technology Inc. (2006), MPLAB PICkit Programmer. [Online] Available: <http://www.microchip.com/DevelopmentTools/ProductDetails.aspx?PartNO=dv164005> (July 19, 2010)